










STING activation promotes robust immune response and NK cell-mediated tumor regression in glioblastoma models

Gilles Berger^{a,b,c,1} , Erik H. Knelson^d , Jorge L. Jimenez-Macias^a, Michal O. Nowicki^a, Saemi Han^d, Eleni Panagioti^e , Patrick H. Lizotte^{d,e} , Kwasi Adu-Berchie^f, Alexander Stafford^c, Nikolaos Dimitrakakis^c, Lanlan Zhou^{f,g}, E. Antonio ChioCCA^a, David J. Mooney^{c,h} , David A. Barbie^d , and Sean E. Lawler^{a,1} 

Edited by Zhijian Chen, The University of Texas Southwestern Medical Center, Dallas, TX; received June 15, 2021; accepted May 8, 2022

Immunotherapy has had a tremendous impact on cancer treatment in the past decade, with hitherto unseen responses at advanced and metastatic stages of the disease. However, the aggressive brain tumor glioblastoma (GBM) is highly immunosuppressive and remains largely refractory to current immunotherapeutic approaches. The stimulator of interferon genes (STING) DNA sensing pathway has emerged as a next-generation immunotherapy target with potent local immune stimulatory properties. Here, we investigated the status of the STING pathway in GBM and the modulation of the brain tumor microenvironment (TME) with the STING agonist ADU-S100. Our data reveal the presence of STING in human GBM specimens, where it stains strongly in the tumor vasculature. We show that human GBM explants can respond to STING agonist treatment by secretion of inflammatory cytokines. In murine GBM models, we show a profound shift in the tumor immune landscape after STING agonist treatment, with massive infiltration of the tumor-bearing hemisphere with innate immune cells including inflammatory macrophages, neutrophils, and natural killer (NK) populations. Treatment of established murine intracranial GL261 and CT-2A tumors by biodegradable ADU-S100-loaded intracranial implants demonstrated a significant increase in survival in both models and long-term survival with immune memory in GL261. Responses to treatment were abolished by NK cell depletion. This study reveals therapeutic potential and deep remodeling of the TME by STING activation in GBM and warrants further examination of STING agonists alone or in combination with other immunotherapies such as cancer vaccines, chimeric antigen receptor T cells, NK therapies, and immune checkpoint blockade.

STING | glioblastoma | immunotherapy | NK cells

Immunotherapy has profoundly altered cancer treatment (1, 2). In particular, unprecedented responses to immune checkpoint blockade (ICB) in some cancer types have clearly established that the host immune system can be retrained to eliminate tumors. However, many tumors remain resistant to ICB, and numerous studies suggest that these may benefit from additional treatments that create a tumor microenvironment more conducive to immune activation (3, 4). Therefore, understanding the key mechanisms needed to effectively modulate the intratumoral (IT) microenvironment is an area of major importance, and therapeutics that break local IT immunosuppressive mechanisms may allow the development of effective antitumor immunity.

Glioblastoma (GBM) is the most common primary malignant brain tumor, with ~10,000 newly diagnosed cases per year in the United States (5). Patients have a dismal median survival of 15 mo with the current standard of care of surgery followed by postoperative chemoradiotherapy (6), and new therapeutic approaches are still an urgent and unmet need. Despite the successes of ICB in some cancers (7–9), GBM remains resistant, albeit with some indications of response in the neoadjuvant setting in recurrent GBM (10–14). It is thought that the highly immunosuppressed “cold” and nonimmunogenic tumor microenvironment (TME) in GBM is a major factor in resistance to ICB (13). Local immunostimulatory approaches can increase ICB efficacy in GBM in preclinical settings (15, 16) and clinically in other tumor types (17–19). These use the IT delivery of agents such as oncolytic viruses (20, 21) or small molecules that activate innate immune signaling in the TME, with the goal of initiating an antitumor immune response, overcoming immunosuppressive mechanisms, and remodeling the TME (22, 23).

The cytoplasmic double-stranded DNA (dsDNA) sensing pathway, cyclic guanosine monophosphate-adenosine monophosphate synthase (cGAS) - stimulator of interferon genes (STING), has emerged as a next-generation immunotherapy target with potent local immune stimulatory properties. The STING protein is localized to the

Significance

Modulation of the immune microenvironment is critical for immunosuppressive and therapy-refractory tumors such as glioblastoma. Activation of the stimulator of interferon genes pathway deeply remodels the brain tumor environment and attracts innate immune cells and natural killer cell populations, producing a robust antitumor effect with long-term immune memory. We further show that human glioblastoma tissue can respond to the therapy and lay the foundations for combined intracranial immunotherapies by using cross-linked biodegradable brain implants.

Author affiliations: ^aHarvey Cushing Neuro-Oncology Laboratories, Department of Neurosurgery, Brigham and Women's Hospital, Harvard Medical School, Boston, MA 02115; ^bMicrobiology, Bioorganic and Macromolecular Chemistry, Faculty of Pharmacy, Université Libre de Bruxelles, Brussels 1050, Belgium; ^cWyss Institute for Biologically Inspired Engineering, Harvard University, Cambridge, MA 02138; ^dDepartment of Medical Oncology, Dana-Farber Cancer Institute, Boston, MA 02115; ^eHuman Tumor Profiling Group, Belfer Center for Applied Cancer Science, Boston, MA 02115; ^fLegorreta Cancer Center, Brown University, Providence, RI 02912; ^gDepartment of Pathology and Laboratory Medicine, Brown University, Providence, RI 02912; and ^hHarvard John A. Paulson School of Engineering and Applied Sciences, Harvard University, Cambridge, MA 02138

Author contributions: G.B. and S.E.L. designed research; G.B., E.H.K., J.L.J.-M., S.H., E.P., K.A.-B., A.S., N.D., and L.Z. performed research; M.O.N. and P.H.L. contributed new reagents/analytic tools; G.B., E.H.K., E.A.C., D.J.M., D.A.B., and S.E.L. analyzed data; and G.B. and S.E.L. wrote the paper.

The authors declare no competing interest.

This article is a PNAS Direct Submission.

Copyright © 2022 the Author(s). Published by PNAS. This article is distributed under Creative Commons Attribution-NonCommercial-NoDerivatives License 4.0 (CC BY-NC-ND).

¹To whom correspondence may be addressed. Email: gilles.berger@ulb.be or sean_lawler@brown.edu.

This article contains supporting information online at <http://www.pnas.org/lookup/suppl/doi:10.1073/pnas.2111003119/-DCSupplemental>.

Published July 5, 2022.

endoplasmic reticulum membrane and is critical for immune sensing of pathogens and cancer. Activation of STING leads to type I interferon (IFN) production in response to cytosolic dsDNA (24–27). The sensor protein for cytosolic dsDNA is the enzyme cGAS, which catalyzes the formation of the cyclic dinucleotide (CDN) cyclic-GMP-AMP ([G(2',5')pA(3',5')p]; cGAMP) (28–34). These CDNs bind the STING dimer (32), inducing conformational changes and downstream events leading to the recruitment and phosphorylation of TANK binding kinase 1 (TBK1) followed by the dimerization and phosphorylation of IFN regulatory factor 3 (IRF-3) and the transcription of IFN-associated genes (31, 35–38). Besides the endogenous 2',3'-cGAMP, CDNs can be pathogen derived and are ubiquitous second messengers in prokaryotic species (23).

ADU-S100, a synthetic compound used in the present study, is based on the typical CDN scaffold, with two adenines and a substitution of the phosphodiester linkages by phosphorothioates, making it resistant to enzymatic degradation (39, 40). STING agonists promote potent antitumor immunity in pre-clinical models (25–27, 41, 42), are considered promising anticancer agents with remarkable preclinical efficacy in some tumor models (21, 22, 24, 43, 44), and are being investigated in clinical trials for various solid cancers. STING activation in the brain for cancer treatment has also shown promise in initial studies (45–47), but the nature of the STING pathway in tumors like GBM has not been delineated, and the effects of STING agonists on the GBM TME have not been explored in detail. Their application in the central nervous system and for GBM treatment are thus still poorly defined but have potential to overcome the high levels of immunosuppression in GBM (45).

Here, we show that STING can be activated in human GBM, where it is expressed highly in tumor-associated blood vessels. We define responses to IT STING agonist delivery in murine GBM models and show that IT biodegradable implants loaded with ADU-S100 can promote long-term survival and immune memory in murine GBM, supporting further development of this approach.

Results

STING Pathway Status in GBM. Although STING is considered a promising target in cancer, expression of STING pathway components in GBM has not been studied. Therefore, we first characterized the expression of the key components of the cGAS-STING-IRF3 pathway in GBM, in both patient GBM samples and GBM cell lines. Western blotting showed low levels of cGAS expression in patient GBM samples and various levels of STING, TBK1, and IRF-3 (Fig. 1*A*). All the GBM cell lines tested, comprising patient-derived neurosphere cells G9 and G30 (48), as well as the two murine models used in the present work (GL261 and CT-2A), express cGAS, STING, TBK1, and IRF-3 at the protein level (Fig. 1*A*). Analysis of STING and phospho-TBK1 (Ser172) immunohistochemical (IHC) staining in a tissue microarray (TMA) showed a range of expression that is highest in GBM and lowest in normal brain, with intermediate levels in anaplastic astrocytoma and oligodendroglioma specimens (Fig. 1*B*). In the normal human brain, STING is expressed in a subset of cells and is particularly prominent in the vasculature, and this picture holds true for the majority of GBM cases in our TMA (Fig. 1*C* and *D*). Staining was also observed in individual cells scattered throughout the tumor parenchyma. pTBK1 was detected in the vasculature of GBM samples, indicating that there may be some

STING pathway activation in GBM vasculature, in contrast to normal brain vasculature, where pTBK1 staining is absent (Fig. 1*C* and *D*) (49). In mice, STING is readily detectable in both CT-2A and GL261 tumors *in vivo* (*SI Appendix*, Fig. S1). The cGAS-STING pathway shows some degree of baseline activation in GL261 tumors, pTBK1 being colocalized with markers of the vasculature such as CD31 and α -SMA (Fig. 1*E*). Tumors are also infiltrated and surrounded by STING-positive cells (Fig. 1*F* and *G*) that mainly comprise F4/80⁺ and IBA1⁺ cells, as members of the innate myeloid immune population and microglia (Fig. 1*H* and *I*, respectively).

The STING Pathway Is Functional in GBM and Elicits Immune-Mediated Tumor Cell Killing *In Vitro*. CXCL10 is an important cytokine produced downstream of type I IFN after STING activation and is commonly used to measure STING activity in human cancer models (50, 51). Using a CXCL10 enzyme-linked immunosorbent assay (ELISA), we found that the STING pathway is nonfunctional in all of the tested human GBM cell lines (*SI Appendix*, Fig. S2). Similarly, the murine glioma cell lines CT-2A and mut3 were not responsive to STING agonists, with GL261 cells being a notable outlier that responded strongly to STING agonist treatment, as demonstrated by CXCL10 release (Fig. 2*A*). Human brain vascular pericytes (HBVPs) and the human brain microvascular endothelial cell line hCMEC/D3 were responsive to STING agonist treatment, supporting a role of STING in the vasculature (Fig. 2*A*). We then investigated the feasibility of activating STING in GBM, using patient GBM specimens that were cultured as explants in suspension, and CXCL10 release measured after treatment with the STING agonist ADU-S100 (49). These patient samples were responsive to treatment with the STING agonist, producing various levels of inflammatory cytokines, indicating the activation of the STING pathway within the tumor tissue (Fig. 2*B* and *C*), and establishing that STING can be activated in human GBM and is therefore a potential immunotherapeutic target. After having established that the STING pathway was present and functional in GBM tissue, we tested the activity of STING agonists *in vitro* through coculture immune-mediated cell killing assays (Fig. 2*D* and *E*). GBM neurospheres made from GFP-expressing G9pCDH patient-derived GBM cells (48) were incubated with human peripheral blood mononuclear cells (PBMCs) freshly extracted from healthy donors at different ratios and treated with ADU-S100 (Fig. 2*E*). This showed that ADU-S100 is not toxic to GBM neurospheres, even at the highest concentration (Fig. 2*E*). In contrast, in the presence of PBMCs we observed an ADU-S100 concentration-dependent immune cell killing of the GBM neurospheres (Fig. 2*F*) with immune-mediated cytotoxicity being efficient between 12.5 and 50 μ M, while the effect is reduced at 100 μ M probably due to T cell toxicity at high STING agonist concentrations, as evidenced previously (52). The effects of the STING agonist increased with PBMC concentration, indicating an immune-mediated killing effect (Fig. 2*F*).

STING Activation in Intracranial GBM Models Drives Innate Immune Cell Infiltration. To understand the effects of STING agonists on the GBM TME, we characterized the immune response and immune infiltrates after ADU-S100 treatment of GL261 and CT-2A tumors in immunocompetent mice. Initial pilot studies using 2',3'-cGAMP or ADU-S100 to activate STING indicated a strong innate immune response 3 d after treatment and an increase in myeloid populations, together with a survival benefit (*SI Appendix*, Fig. S3). We then analyzed in detail brain infiltrating leukocytes (BILs) by flow cytometry

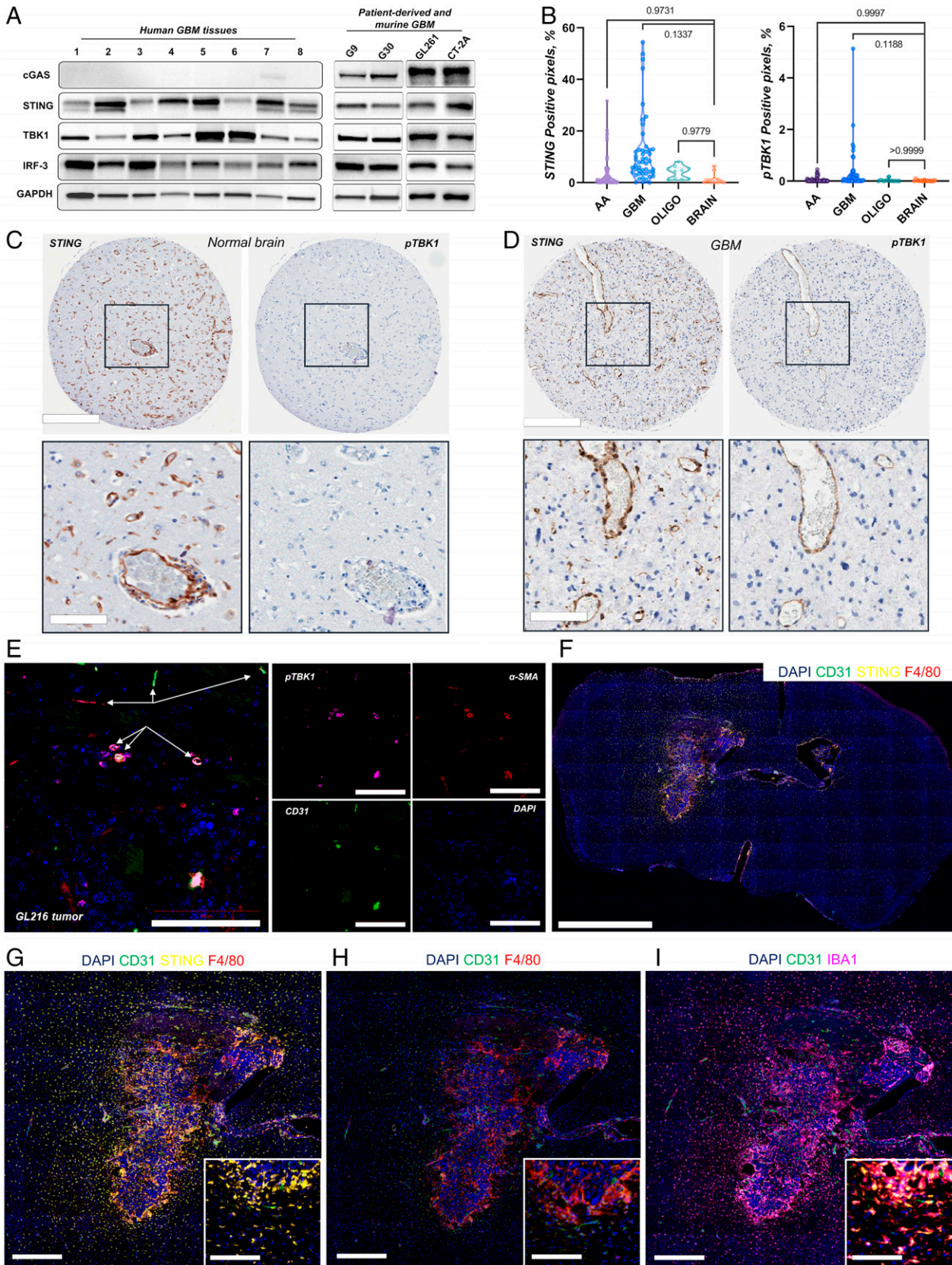


Fig. 1. Assessment of STING pathway expression in glioblastoma. (A) Immunoblot of cGAS, STING, TBK1, IRF-3, and glyceraldehyde 3-phosphate dehydrogenase (GAPDH) levels in patient GBM tissue, patient-derived GBM cells, murine GL261, and CT-2A glioma cells. (B) Quantification of TMA sections for STING and pTBK1, as percentage of positive pixels. AA, $n = 77$; GBM, $n = 49$; oligo, $n = 10$; brain, $n = 16$. P values calculated by one-way ANOVA. (C) Representative TMA sections immunostained for STING and pTBK1 in normal brain and (D) GBM. Scale bars, 400 and 100 μm . (E) Immunofluorescence staining showing partial activation of the STING cascade in GL261 tumors and the colocalization of pTBK1 within the vasculature (CD31 and α -SMA). *Left* panel: White arrows point to blood vessels. *Right* panel: Split channels show colocalization of pTBK1 with the vascular markers CD31 and α -SMA. Scale bar, 100 μm . (F) Multiplex immunofluorescence staining on a whole brain section from a GL261 tumor bearing mouse showing DAPI (blue), CD31 (green), STING (yellow), and F4/80 (red). Scale bar, 1 mm. (G-I) Immunofluorescence staining of the tumor zone showing selected markers as indicated (same as above plus IBA1 in magenta). Scale bars, 400 and 100 μm .

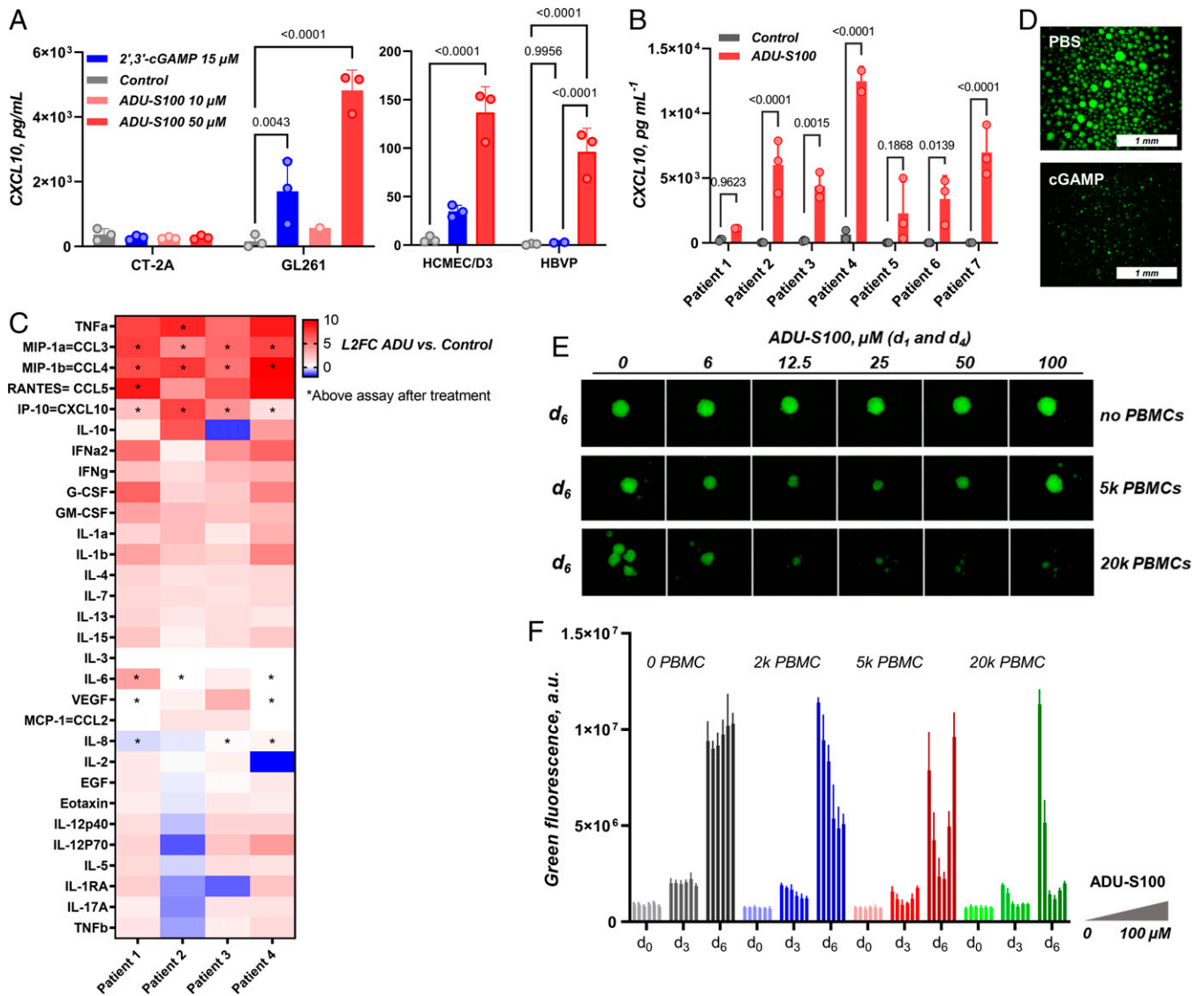


Fig. 2. Effects of STING activation on GBM cells. (A) Levels of CXCL10 as measured by ELISA 24 h after STING agonist treatment of the indicated cell lines. *P* values calculated by two-way ANOVA. (B) CXCL10 ELISA levels from freshly resected patient GBM specimens cultured for 2–5 d after surgery (patient 1, 2 d; patients 2, 3, 5, 6, and 7, 3 d; patient 4, 5 d). Control vs. ADU-S100 (50 μ M). *P* values calculated by two-way ANOVA. (C) Log₂ fold-change cytokine/chemokine differences in conditioned media ADU-S100 (50 μ M) vs. controls, from freshly resected patient GBM specimens cultured as above. (D) PBMC/G9pCDH coculture, \pm cGAMP treatment at 100 μ M, formulated with lipofectamine. (E) Immuno-GILA assay by coculture of fluorescent neurospheres (G9pCDH) and fresh PBMCs, treated with ADU-S100 (0–100 μ M). (F) Fluorescence plots from the immuno-GILA assay with the various GSC:PBMC ratios at the indicated cell numbers over a period of days as shown in the bar chart over a range of drug concentrations.

by using a panel of 13 immunological markers after an IT bolus of 50 μ g of ADU-S100 (39, 53) at day 14 after GL261 intracranial implantation. Three days after treatment, we observed the suppression of microglia, and both CD4⁺ and CD8⁺ T cell populations, and infiltration of NK and CD11b⁺/Gr1⁺ inflammatory immune cells (Fig. 3B). At 7 d after treatment, T cell proportions recovered and were increased compared with baseline levels. PD-L1 expression was sharply increased shortly after treatment in CD45-negative cells (Fig. 3C, day 3). In this regard, granulocytic myeloid-derived suppressor cell (G-MDSC) populations also increase, although these may not be mature and immunosuppressive but rather inflammatory (Fig. 3D). These populations do not show increased expression of PD-L1 (SI Appendix, Fig. S4A).

To obtain a more global and precise picture of immune activation following IT ADU-S100 treatment in the brain, we analyzed the multidimensional data by t-distributed stochastic neighbor embedding (t-SNE) coupled to FlowSOM (54), allowing efficient clustering of populations and visualization of

the global shift in immune populations for treated samples. Fig. 3E shows two-dimensional (2D) t-SNE density plots of the controls and ADU-S100-treated groups at day 3; the immunological landscape reveals extensive reorganization of the TME after treatment and activation of the STING pathway (Fig. 3E). The TME at day 7 also follows a deep remodeling (Fig. 3E). We proceeded to cluster these populations by using FlowSOM, and this revealed that the cell types making the bulk of the immune profile of the treated brain infiltrates were of two main types, which are mapped on the tSNE plot at day 3 in Fig. 3F: NK populations, defined as CD3⁻/CD11b⁺/CD11c^{Int}/Gr1⁻/CD49b⁺, and inflammatory myeloid cells comprising macrophages, dendritic cells (DCs), and neutrophils, collectively defined as CD3⁻/CD11b⁺/CD11c^{Int}/Gr1⁺/CD49b⁻. These could also comprise MDSC-type populations, although in this case they represent immature myeloid cells that would not yet convey suppressive phenotypes (55). These inflammatory populations are seen in other inflammatory states in the brain, such as in

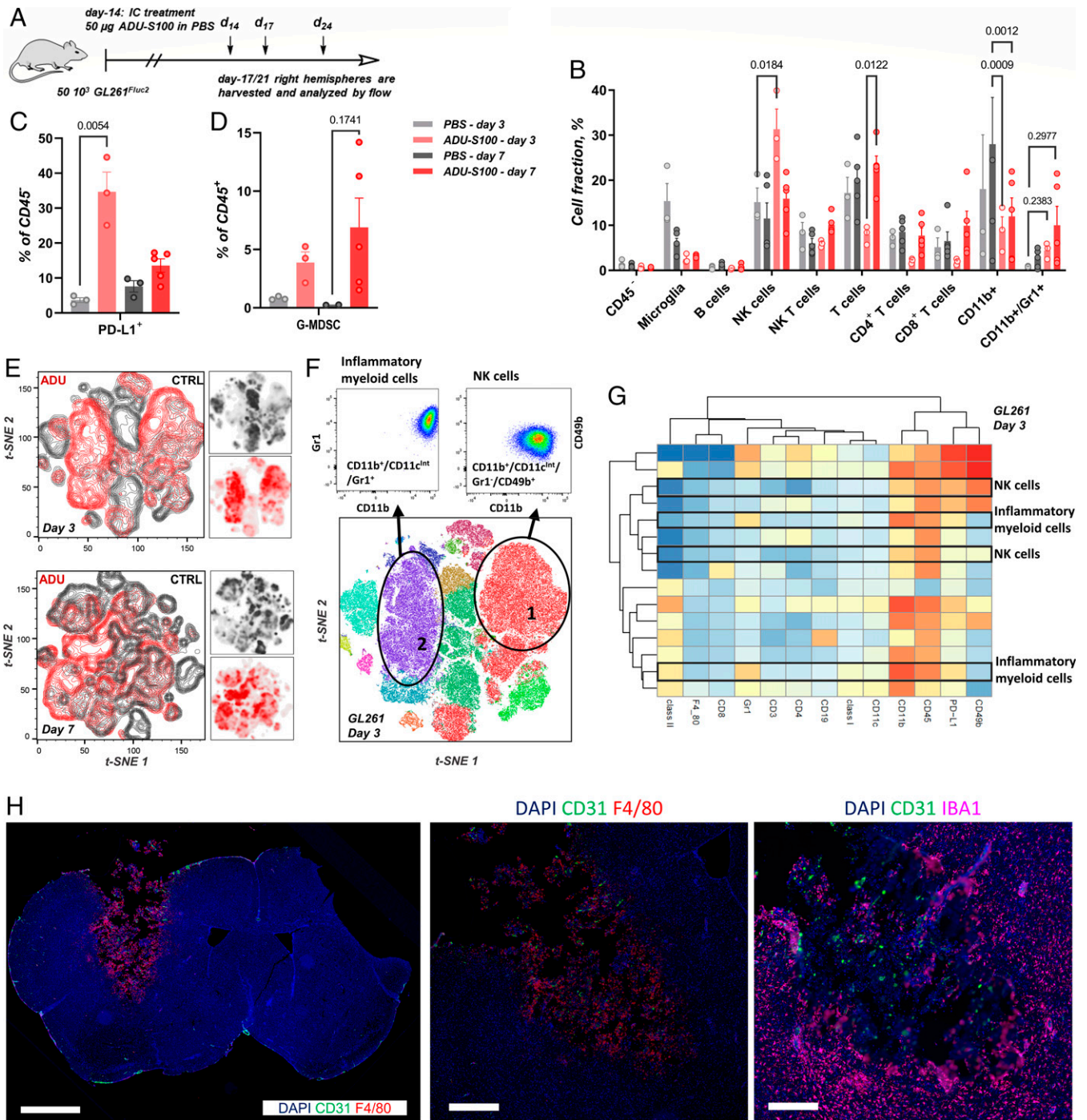


Fig. 3. Assessment of GL261 tumor immune infiltrates after STING agonist treatment. (A) Timeline of the GL261 in vivo experiments for BILs. Biologically independent animals per group (ADU-S100/PBS day 3, $n = 3$; PBS day 7, $n = 3$; ADU-S100 d 7, $n = 5$). P values calculated by two-way ANOVA. (B) BIL profile of GL261 tumors at days 3 and 7 using a typical gating procedure. (C) Percentage of PD-L1⁺ CD45⁺ cells. P value calculated by unpaired t test. (D) G-MDSC populations within the BILs. P value calculated by unpaired t test. (E) 2D t-SNE plots at day 3 and 7; treated mice in red and controls in dark gray. (F) t-SNE map for treated mice at day 3 colored by the FlowSOM populations. (G) Heatmap and hierarchical clustering of the FlowSOM populations at day 3. (H) Immunofluorescence staining on a whole brain section and the necrotic tumor zone 72 h after ADU-S100 treatment (50 μ g, bolus in PBS).

the response to traumatic brain injury (56). Fig. 3G shows the clustering of the FlowSOM populations at day 3 for GL261, and the main increased cell populations are highlighted. We can divide these into two major groups, one belonging to the NK type, with low Gr1 and mid- to high expression of CD49b, and the other group comprising Gr1⁺/CD49b⁻ inflammatory populations. Cytotoxic infiltrates of F4/80⁺ cells are further evidenced by the multiplexed immunofluorescence images 72 h after treatment of GL261 tumors (Fig. 3H).

We then performed a similar study in CT-2A tumors treated with a 50 μ g ADU-S100 bolus (day 7 postimplantation), and the tumor-bearing hemispheres were analyzed for BILs (Fig. 4A). As in the case of GL261, we observed up-regulation of PD-L1 and changes in the MDSC populations; however, the latter did not show significant changes in PD-L1 expression (Fig. 4B and *SI Appendix, Fig. S4B*). 2D t-SNE once again revealed a complete remodeling of the TME and its immune profile, with density plots that are completely shifted (Fig. 4C),

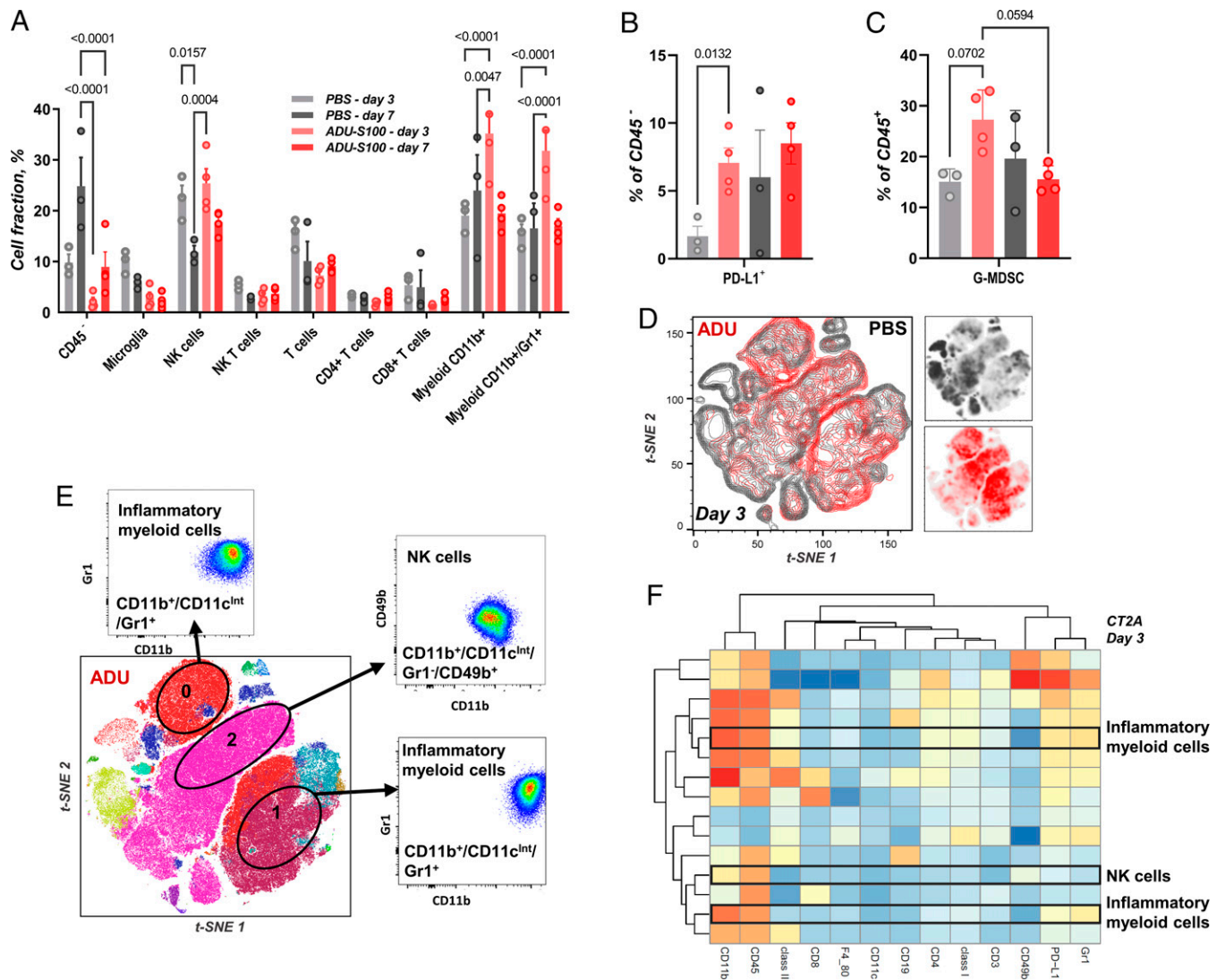


Fig. 4. Assessment of CT-2A tumor immune infiltrates after STING agonist treatment. (A) BILS profile of CT-2A tumors at days 3 and 7 using a typical gating procedure. Biologically independent animals per group (PBS, $n = 3$; ADU-S100, $n = 4$). P values calculated by two-way ANOVA. (B) PD-L1⁺ percentage of CD45⁺ cells. P value calculated by unpaired t test. (C) MDSC populations within the BILs. P values calculated by one-way ANOVA. (D) 2D t-SNE plots at day 3; treated mice in red and controls in dark gray. (E) t-SNE map for treated mice at day 3 colored by the FlowSOM populations; main up-regulated FlowSOM populations are highlighted. (F) Heatmap and hierarchical clustering of the FlowSOM populations at day 3.

showing consistent and significant activation of the innate immune system at day 3, with an inflammatory TME comprised of NK populations and inflammatory immature innate cells of the myeloid lineage (Fig. 4D–F). A similar picture was obtained at day 7 with NK and innate immune cell infiltrates (SI Appendix, Fig. S5). Our results in the brain therefore support the critical participation of NK populations in the STING-induced antitumor effects (57, 58). Thus, IT delivery of STING agonists in murine GBM results in a strong innate immune response characterized by partially immature myeloid infiltrates and PD-L1 up-regulation.

We analyzed the transcriptome of GL261 tumors after ADU-S100 treatment and isolation of the BILs from the tumor-bearing hemisphere at 72 h. We can clearly distinguish the two conditions and the effect of the STING therapy, as seen from the principal component analysis of the individual samples (SI Appendix, Fig. S6A). This showed an acute specific activation of innate defense mechanisms (SI Appendix, Fig. S6 B and D). A volcano plot highlighted 20 of the most differentially expressed genes, showing high induction of the *Ifi1* gene (IFN-induced protein with tetrapeptide repeats 1B-like 1), in accordance with the activation

of the type I IFN pathway. IFIT proteins are important for viral defense and are known to be widely expressed in the mouse brain. Activation of the *ifit1* gene downstream of DNA sensing has been established (59). Other highly overexpressed genes included *Ifi47*, *Tnf*, and *Mx2*, all of which have been implicated in IFN signaling (SI Appendix, Fig. S6B) (60). It is worth noting that the tumor necrosis factor (TNF) alpha response is also seen in our human Luminex panel on the fresh GBM samples (Fig. 2C). Gene enrichment analysis also revealed terms related to the type I IFN signaling pathway being highly enriched in the ADU-S100 treated samples, in addition to terms related to NF- κ B activation and translocation, cytokine production, and inflammatory response, while the lipoxygenase pathway was down-regulated (SI Appendix, Fig. S6D) (61), further supporting immune activation. We also compared gene expression signatures between ADU-S100-treated and PBS controls for genes known to be responsive to IFN γ (type II IFN), IFN β (type I IFN), and IFN α (type I IFN) treatment (SI Appendix, Fig. S6C) (62). Treated samples had higher average gene expression signatures for all three IFN responsive gene sets that were investigated, with IFN α and IFN β showing statistically significant differences between the two conditions (false discovery

rate [FDR]–adjusted P values of 0.0062 and 0.0032, respectively). Transcriptomic analyses therefore showed that the GL261 tumors were highly responsive to ADU-S100 treatment, characterized by potent IFN signaling and innate immune activation. The involvement of NK cells in the response to the STING agonist was highlighted by increased NK cell gene signature shown in the violin plot (*SI Appendix, Fig. S6C*). NCR1, KLRD1, CD247, PRF1, and TNF are found among the highly up-regulated genes after ADU-S100 treatment. NCR1 (NKp46) is the most highly up-regulated and is one of the main activators of NK cells (63, 64). KLRD1, also known as CD94, is widely expressed in NK cells and some T cells and functions together with NKG2A/C as an immune checkpoint (65). CD247, expressed in NK and T cells, associates with NCR1, NCR3, and CD16. It is involved in the responsiveness of NK cells, such as degranulation (65). PRF1 (perforin 1) is a major component of cytolytic granules and is involved in the cytotoxic activity of NK and T cells (65). A volcano plot for this specific gene set (i.e., NK-mediated cytotoxicity) can be found in the *SI Appendix, Fig. S6E*.

Therapeutic STING Brain Implants Show High Efficacy in Mouse Models. With evidence of immune-dependent tumor cell killing, remodeling of the TME, and elevated innate immune response after IT injection of ADU-S100, we performed efficacy studies in murine GBM models. This was performed by using ADU-S100 loaded IT implants, made of cross-linked alginate chains and designed to release the STING agonist over a period of a few days (Fig. 5*A* and *B*) (66). This approach was chosen as it may be more clinically applicable than the bolus injection and can also be adapted and combined with other therapies such as immune checkpoint blockade. The gel matrix used here was composed to perform as a rapid release system for small molecules and a slow release delivery for larger molecules. Therefore, the small molecule STING agonist is released quickly, to mimic the bolus injection and trigger the immune reaction, while the aPD-1 antibody slowly comes into effect to oppose the chronic immunosuppressive effects of STING activation over time. To test the hydrogel approach, GL261 tumors were treated with 50 μ g of ADU-S100 in biodegradable hydrogels 2 wk after implantation, and the tumors were monitored by bioluminescence and MRI starting 4 d after treatment (Fig. 5*C–E*). A striking effect of the therapy was seen shortly after treatment, with the IVIS signal increasing sharply in the control group (Fig. 5*E*), together with the tumor size as seen from MRI (Fig. 5*D*; for full MRI data, see *SI Appendix, Fig. S7*). The tumors completely regressed 2 wk after treatment in two-thirds of the treatment group, while the mock treated mice were already beyond their survival endpoints. The observed survival rate of STING monotherapy is thus comparable to that of the reported combined aPD-1 and aCTLA-4 therapy in the same model (18). Two-thirds of the treated mice were long-term survivors and were rechallenged by injection of GL261 cells into the contralateral hemisphere at day 150 and did not develop tumors, showing the establishment of long-term adaptive immunity after STING agonist treatment of GL261 tumor-bearing animals (Fig. 5*C*). Analysis of BILs 17 d after treatment with our ADU-S100 implants showed a sustained myeloid infiltration and a low PD-L1 expression on CD45-negative cells, in contrast with the acute up-regulation shortly after treatment (*SI Appendix, Fig. S8 C and D*). The treated mice were tumor free at that time point and went on to become long-term survivors.

We then turned to the aggressive and notably colder, non-immunogenic CT-2A model as a more challenging syngeneic GBM mouse model (67, 68). The high immunogenicity of

GL261 tumors may not correlate well with the clinical reality of GBM (69, 70). A similar efficacy study using cross-linked hydrogels to deliver ADU-S100 was conducted with the CT-2A model. This showed a significant increase in the median survival from 18 to 29 d (Fig. 5*F*). Representative MRI pictures are shown in Fig. 5*G*, and the full set of images can be found in *SI Appendix, Fig. S9*. No long-term survivors were observed in the STING monotherapy group, supporting previous observations that the CT-2A model is more resistant to immunotherapy than GL261 (67). We then performed an initial pilot study of the combination of ADU-S100 and aPD-1 loaded into hydrogels. This study led to the emergence of long-term survivors (Fig. 5*H*), supporting further detailed studies with this approach.

Finally, to evidence the critical involvement of NK populations in the tumor cell killing and the preclinical efficacy of ADU-S100 treatment in our models, we performed an NK depletion study on GL261-bearing mice. NK cell depletion was performed before treatment (Fig. 5*I*) and throughout follow-up, showing a complete loss of efficacy for the ADU-S100 treatment, while the isotype group treated with a 50 μ g ADU-S100 bolus consistently showed a high percentage of tumor-free survivors (about two-thirds; Fig. 5*J*). This finding highlights the importance of alterations in tumor infiltrating immune cells after STING agonist treatment (Fig. 3*E–G*) and the critical reshaping of the TME with profound infiltration by myeloid and NK populations, the latter being responsible for tumor rejection.

Discussion

Here we report the immune effects and efficacy of STING activation in the brain for GBM, using a comprehensive flow cytometry panel of immune markers and intracranial gel implants for extended release of the STING agonist, to limit acute toxic effects and allow for combined therapies that overcome immunosuppressive effects over an extended period. Our data show both efficacy and feasibility of this approach. First, single IT treatment with an ADU-S100 bolus triggers a deep remodeling of the TME and rapidly drives innate infiltrates to the tumor, composed mainly of inflammatory and immature innate cells such as macrophages, neutrophils, and NK populations. NK cells have recently been highlighted as a major cytotoxic component of STING therapy (57), and although tumor regression from STING agonists has been attributed primarily to CD8+ T cells (41, 42, 53), recent data demonstrate the importance of NK cell populations in this effect, which in numerous cancer models can be CD8-independent (57, 58, 71). We here confirm the crucial participation of NK cells in the anti-tumor effects of STING agonists *in vivo*, both from the analysis of the TME in intracranial models and from the complete loss of efficacy of STING agonist treatment in NK-depleted animals. An important observation supporting the application of STING agonists in GBM comes from our use of tumor explants, which were all responsive to STING agonists as determined by inflammatory cytokine production.

The status of the STING pathway in GBM is poorly understood. STING pathway components are present largely in tumor cells and tumors in general, as detected by Western blotting. Using ELISAs, we showed that cultured tumor cells did not respond to STING agonist treatment, with the notable exception of GL261. This lack of response in tumor cells has also been seen in other tumor types, such as melanoma, for which the STING pathway can be epigenetically silenced through cGAS or

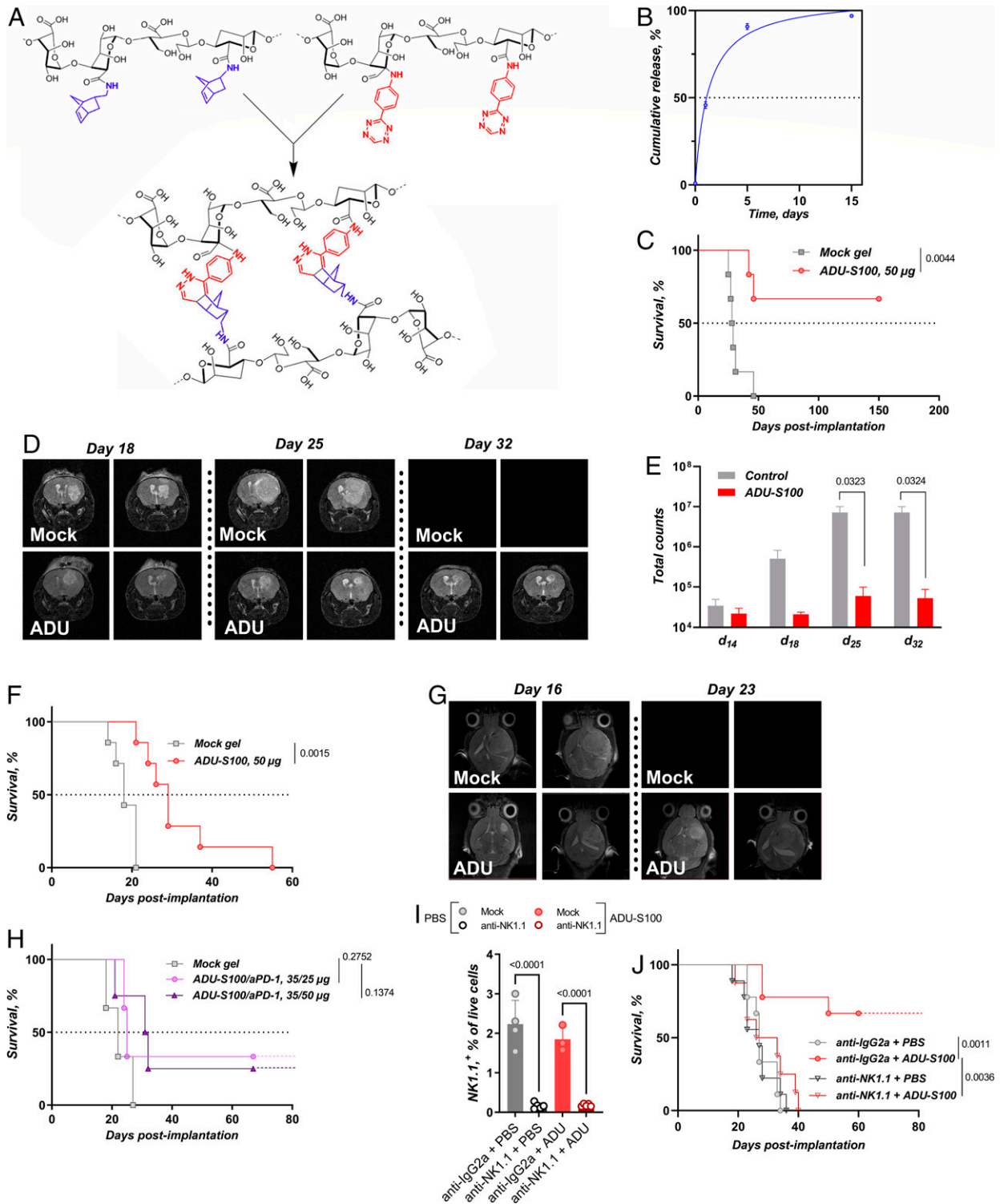


Fig. 5. STING agonist treatment of murine GBM in vivo. (A) Biodegradable cross-linked hydrogels used as intracranial implants. (B) In vitro gel release profile for cGAMP. (C) Kaplan-Meier plot for the GL261 ADU-S100 monotherapy study. P value calculated by the Gehan-Breslow-Wilcoxon test. 5×10^4 GL261^{Fluc} cells were implanted at day 0, and intracranial gels were implanted at day 14. Biologically independent animals per group (mock gel, $n = 6$; ADU-S100 50 μ g, $n = 6$). (D) GL261 in vivo efficacy study showing MRI starting posttreatment day 18. Blank images represent euthanized animals. (E) Bioluminescence IVIS signal from treatment day to endpoint, GL261^{Fluc}. P values calculated by multiple unpaired t tests. (F) Kaplan-Meier plot for the CT-2A ADU-S100 monotherapy study. P value calculated by the Gehan-Breslow-Wilcoxon test. 5×10^4 CT-2A cells were implanted at day 0, and intracranial gels were implanted at day 7. Biologically independent animals per group (mock gel, $n = 6$; ADU-S100 50 μ g, $n = 7$). (G) CT-2A in vivo efficacy study showing representative MRI pictures at days 18 and 23. Blank images represent euthanized animals. (H) Kaplan-Meier plot for the CT-2A ADU-S100/aPD-1 combination study. P value calculated by the Gehan-Breslow-Wilcoxon test. 5×10^4 CT-2A cells were implanted at day 0, and intracranial gels were implanted at day 7. Biologically independent animals per group (mock gel, $n = 3$; ADU-S100/aPD-1 35/25 μ g, $n = 3$; ADU-S100/aPD-1 35/50 μ g, $n = 4$). (I) Percentage of NK cells as measured in the whole blood of mice 32 h after intraperitoneal administration of the anti-NK1.1 depleting antibody, leading to >98% removal of the targeted immune cells ($n = 3-5$ mice per group). P values calculated by one-way ANOVA. (J) Kaplan-Meier plot for the GL261 ADU-S100 monotherapy study with and without NK depletion. 5×10^4 GL261^{Fluc} cells were implanted at day 0, and mice were treated intracranially at day 14. The depleting antibody was injected 36 h before STING agonist treatment and biweekly after that. P value calculated by the Gehan-Breslow-Wilcoxon test. Biologically independent animals per group (mock + PBS, $n = 8$; anti-NK1.1 + PBS, $n = 8$; mock + ADU-S100 50 μ g, $n = 9$; anti-NK1.1 + ADU-S100 50 μ g, $n = 8$).

STING itself (72). Stromal cell types tested, including brain endothelial cells and pericytes, were responsive to STING agonists. Our immunostaining showed that STING is present prominently in the vasculature of tumors as well as normal brain (49). Presumably this enrichment of STING provides a sensing mechanism for bloodborne pathogens in the circulation. Interestingly, we were able to detect phospho-TBK1 in tumor endothelium but not in normal brain, indicating some level of baseline pathway activation in GBM. It is unknown at present how this is stimulated and what role it may play in GBM tumor progression, though we have previously shown that low-level activation of vascular STING by tumor-derived 2'3'-cGAMP can limit T-cell infiltration in non-small cell lung cancer (49). In other brain studies, several neuropathologies have recently been linked to the activation of the STING pathway and the IFN proinflammatory response, such as Gaucher disease (73), Aicardi-Goutières syndrome (74), and models of prion diseases (75). Inflammatory populations like macrophages, DCs, and neutrophils, which were an important part of the immune profile of the STING agonist-treated tumors in the present study, have until now been better studied in the case of brain injury and damage (56, 76, 77). STING seems to play a role in modulating immunological responses in the brain, and both neurotoxic and neuroprotective effects have been observed (56). The activation of the cGAS-STING pathway is a component of brain injury after ischemic stroke and appears deleterious after traumatic brain injury (56, 76). It is worth noting that NK cell populations here again form a central component of the tissue response after intracerebral hemorrhage and its associated inflammation (77).

Based on our work and these reports on inflammatory processes in the brain involving macrophages, DCs, neutrophils, and NK populations, it seems evident that the responses are similar. It appears crucial to be able to modulate this inflammatory response and control it, notably with the use of delivery systems and combined therapies, allowing for the activation of STING and the type I IFN response to trigger sufficient but not deleterious inflammation, with the additional use of ICB or other therapies to further modulate the immune response over time. Toward that goal, we used biodegradable cross-linked gels *in vivo* and showed the feasibility of the approach. Indeed, a single treatment of GL261 and CT-2A tumors with gel-based biodegradable implants led to a cure and long-term immunity for the GL261 model and to a very significant increase in survival in the CT-2A model. The unusual CXCL10 response of GL261 cells to STING agonists and the partial activation of the STING pathway *in vivo*, as evidenced by phosphorylation of TBK1, may contribute to the immunogenic nature of GL261 tumors in mouse and to the high survival benefit seen in multiple preclinical immunotherapy studies in this model (18, 45, 70). Thus, intrinsic STING activation in GL261 tumors may contribute its notable immunogenicity. IFN type I generates antitumor immunity and spontaneous T cell response in both carcinogen-induced and transplantable tumor models (26, 40), and STING represents a major pathway for spontaneous antitumor immunity (25, 78, 79). It is worth noting that the GL261 tumor model was originally induced by the carcinogen methylcholanthrene in a C3H mouse, then transplanted and maintained in C57BL/6 mice (80); GL261 expresses basal major histocompatibility complex MHC I levels, but not MHC II, and carries point mutations in the K-ras and p53 genes. GL261 is considered moderately immunogenic, while the presence of surface B7 costimulatory molecules may render them more susceptible to class I MHC-dependent cytotoxic T cells (81, 82).

The increase in median survival for the CT-2A implanted mice (18–29 d), although not as strong as for GL261, appears promising in light of previous reports and warrants deeper investigation of combined therapies (67). This therapeutic anti-tumor effect in CT-2A tumors, which are nonresponsive to STING agonist *in vitro*, is likely to arise from IFN production in the vasculature, with possible involvement of DCs, astrocytes, and microglia (83–86). A proof-of-concept study presented here, using a combination of ADU-S100 and anti-PD1 in the intracranial gel delivery system, shows that the combination brings more therapeutic potential than the STING therapy alone, with long-term survivors in the cold and nonimmunogenic CT-2A mouse model. The observation of PD-L1 up-regulation in the TME post-STING agonist treatment further supports the use of ICB with anti-PD1, as does our pilot study showing long-term survival in CT-2A tumor implanted animals with anti-PD1 incorporated into the gels. The immunostimulatory effects of STING agonists in our models are also supported by transcriptomic analysis of treated GL261 tumor-associated immune cells, which showed a strong up-regulation of IFN signaling pathways.

To summarize, our promising data confirm the importance of NK populations in the antitumor effects of STING therapies and lays the foundation for the use of STING-loaded brain implants to reshape the TME, trigger immune infiltration, and serve as a support for combination therapies (ICB, cytotoxic chemotherapy) in the near future.

Methods

Cell Culture and Chemicals. GL261Luc2 murine glioma cells were purchased from PerkinElmer. CT-2A murine glioma cells were a gift from Thomas Seyfried (Boston College, Boston, MA). These two murine glioma cell lines were cultured in Dulbecco's modified Eagle's medium (Life Technologies), containing 10% heat-inactivated fetal bovine serum (FBS) and 1% penicillin/streptomycin. HBMEC/D3 and HBVP cells were purchased from ScienCell Research Laboratories and grown according to the manufacturer's recommendations. Primary human glioblastoma stem cells (GSCs) (G9) were obtained by dissociation of gross tumor samples and cultivated in neurosphere media (briefly, neurobasal medium containing vitamin A-depleted B27, 1% GlutaMAX, 20 ng/mL epidermal growth factor, 20 ng/mL fibroblast growth factor, Primocin, and Plasmocin), as previously described (87). All cells were cultured at 37 °C with 5% CO₂, and mycoplasma testing was routinely done by PCR. The STING agonists ADU-S100 and 2',3'-cGAMP were purchased from ChemieTek as the disodium salts (catalog nos. CT-ADUS100 and CT-CGAMP).

Brain TMAs. Brain tumor TMAs (GL2082) were purchased from US Biomax, Inc., and IHC staining for STING and phospho-TBK1 was performed on the Leica Bond III automated staining platform as previously published (53). The antibody for phospho-TBK1 (Cell Signaling Technology #5483, clone D52C2) was run at 1:50 dilution with the Leica Biosystems Refine Detection Kit with ethylenediaminetetraacetic acid (EDTA) antigen retrieval. The antibody for STING (Cell Signaling Technology #13647, clone D2P2F) was run at 1:50 dilution with the Leica Biosystems Refine Detection Kit with citrate antigen retrieval. IHC staining was quantified in QuPath software (0.2.0-m4). The positive pixel detection analysis was used with default settings for 3,3'-diaminobenzidine staining to detect and quantify positive pixels in each of three individual, randomly selected fields per tumor, which were then averaged.

Cytokine Analysis. CXCL10 ELISA (no. DIP100; R&D Systems) was used on media collected from cell culture according to the manufacturer's instructions. Multiplex cytokine arrays were performed as previously described (53) via the bead-based immunoassay approach Bio-Plex Pro Human Cytokine 40-Plex Assay (catalog no. 171AK99MR2) on a Bio-Plex 200 system (catalog no. 171000201) (Bio-Rad Laboratories, Hercules, CA) and the Human Cytokine/Chemokine Magnetic Bead Panel (catalog no. HCYTMAG-60K-PX30) on a Luminex MAGPIX system (Merck Millipore, Billerica, MA). Conditioned media concentrations (pg/mL)

of each protein were derived from five-parameter curve fitting models and plotted as \log_2 fold changes. Lower and upper limits of quantitation were imputed from standard curves for cytokines above or below detection. Above assay read-outs are marked with asterisks.

PBMC-Mediated Cytotoxicity Assays. PBMCs were obtained from healthy human donors as approved by the Institutional Review Board (IRB) at Brigham and Women's Hospital (all samples were de-identified) and isolated with Ficol-Paque PLUS density gradient medium (GE Healthcare Life Sciences) according to the manufacturer's instructions. A single-cell suspension of GBM cells was seeded at 2,000 cells/well ($G9^{pCDH}$) in ultra-low-attachment 96-well plates (Corning) and incubated for 24 h to allow sphere formation. PBMCs were then added with the different ADU-S100 concentrations, and treatment was repeated 3 d later. Cells were then incubated for another 3 d (total = 6 d of coculture). Microscope images of the spheres were taken daily (Nikon TI, 4 \times magnification), and the spheres' fluorescence was measured in ImageJ with a dedicated macro.

Biodegradable Cross-Linked Gels. The two polymeric components were prepared according to our previously published procedures (88). ADU-S100 was loaded by using an appropriate PBS solution of the drug to dissolve the norbornene-alginate component. Both components were mixed right before intracranial injection.

In Vivo Studies. We purchased 7- to 8-wk-old female C57/BL6 mice from Envigo and injected a suspension of 50,000 cells (GL261Luc2, CT-2A) in 2 μ L of PBS intracranially to establish mouse brain tumors (2 mm right lateral, 1 mm frontal to the bregma, and 3 mm deep). Successful tumor implantation was verified by bioluminescence imaging with the Perkin-Elmer IVIS Lumina 3 system. The study end point was considered a weight loss of 20%, onset of neurological symptoms, or signs of pain and distress. All animal experiments and procedures described in this study were approved by Brigham and Women's Institutional Animal Care and Use Committee.

Isolation of Murine BILs. The tumor-bearing cerebral hemisphere was collected from each mouse at the indicated days after tumor implantation and therapy. Single mouse tumor cell suspensions were obtained with a mouse Tumor Disassociation Kit from Miltenyi Biotec (catalog no. 130-096-730). After leukocyte extraction with density gradient medium, cell suspensions were stained and analyzed by flow cytometry.

Mouse Tumor Flow Cytometry. Flow cytometry on mouse tumors was performed as previously described (53). Briefly, after BIL isolation, cell suspensions were subjected to flow cytometry. After live/dead staining with the Zombie NIR Fixable Viability Kit (catalog no. 423106; Biolegend, San Diego, CA) according to the manufacturer's instructions, single-cell suspensions were stained with fluorophore-conjugated primary antibodies (*SI Appendix, Table S1*), in PBS containing 2% FBS at 2 μ g/mL. After washing, cells were resuspended in PBS containing 2% FBS and analyzed on an LSRFortessa flow cytometer (Becton Dickinson, Franklin Lakes, NJ). Levels were compared with isotype control antibodies. The data analyses were performed in FlowJo software (TreeStar). t-SNE was achieved with the embedded FlowJo t-SNE algorithm using default parameters. FlowSOM analysis was performed with the corresponding FlowJo plugin and R. Samples of the gating strategies can be found in the *SI Appendix, Fig. S10*.

Depletion of Peripheral Blood NK Cells. The anti-NK1.1 depleting antibody was purchased from Bio X Cell (catalog no. BE0036), first injected 36 h before the intracranial treatment and biweekly after that. The mock groups used a mouse IgG2a from the same manufacturer (Bio X Cell, catalog no. BE0085). All antibodies were injected intraperitoneally (250 μ g in 100 μ L of *InVivoPure* pH 7.0 Dilution Buffer; Bio X Cell, catalog no. IP0070). Peripheral blood was harvested from the tail vein 32 h after the first injection of the depleting antibody and was analyzed by flow cytometry to determine the NK cell contents.

Histology. Mice were transcardially perfused with PBS (Thermo Fisher). Brains were removed and stored 24 h in 4% paraformaldehyde, then sucrose and slices were prepared with a vibratome (Campden Instruments) and immunostained for calretinin according to the following solutions and protocol: carrier solution, 1% normal horse serum (NHS; Vector Laboratories) with 0.5% Triton (Thermo Fisher) in PBS (Thermo Fisher); blocking solution, 10% NHS with 0.5% Triton in PBS.

After several rounds of PBS washes, slices were blocked for 2 h at room temperature and incubated with primary antibody in carrier solution overnight at 4 $^{\circ}$ C. Slices were washed again in PBS and incubated for 2 h at room temperature in secondary antibody in carrier solution at a 1:1,000 dilution. After four final washes, slices were mounted on slides and coverslipped with 22 \times 50 mm, 0.16- to 0.19-mm-thick cover glass (Fisher Scientific). Images were acquired with an LSM710 confocal microscope (Zeiss) and stitched with Zen 2.1 (black, Zeiss). Confocal images were post-processed in ImageJ (version 2.0).

Immunohistochemical Studies and Multiplexed Immunofluorescence. Immunofluorescent multiplex staining was performed on the Leica Bond RX automated staining platform with a Leica Biosystems Refine Detection Kit. Antibodies were used as follows: pTBK1 (Cell Signaling Technologies; clone D52C2, catalog no. 5483) was run at 1:50 dilution with EDTA antigen retrieval; STING (Cell Signaling Technologies; clone D2P2F, catalog no. 13647S) was run at 1:50 dilution with citrate antigen retrieval; CD31 (Cell Signaling Technology; clone D8V9E, catalog no. 77699) was run at 1:100 dilution with citrate antigen retrieval; IBA1 (Wako; polyclonal, catalog no. 019-19741) was run at 1:500 dilution with citrate antigen retrieval. Imaging was performed on a Leica Versa 200 automated fluorescent/brightfield scanner at 20 \times magnification. Alexafluors 488, 555, 594, and 647 were used for each antibody (respectively).

Immunoblotting. Proteins were isolated from cell lines and content measured by bicinchoninic acid assay (Pierce Biotechnology). Protein extracts were subjected to polyacrylamide gel electrophoresis with either Criterion or Mini-Protein TGX precast gels, transferred to nitrocellulose (Millipore) membranes, and immunoblotted with antibodies (Cell Signaling Technologies, Danvers, MA) that specifically recognize STING (clone D2P2F, catalog no. 13647S), cGAS (clone D1D3G, catalog no. 15102), TBK1 (clone E813G, catalog no. 38066), IRF-3 (clone D83B9, catalog no. 4302), human or mouse anti-GAPDH (ab9484-200; Abcam, Cambridge, MA), and peroxidase-conjugated secondary antibodies (Jackson Laboratories, Bar Harbor, ME). 5% bovine serum albumin blocking buffer was used to dilute primary and secondary antibodies. Imaging of blots and quantitation of bands was performed with the Biorad Gel Doc XR Imaging System.

Imaging Methods. MRI data were acquired with either a BioSpec 3T or a Bruker 7 Tesla. Animals were kept under isoflurane narcosis throughout the scan. Respiration and heart rate were monitored. T2-weighted images were acquired via the RARE pulse sequence with the following settings: TE (echo time), 47.73 ms; TR (repetition time), 4,993.715 ms; RARE factor, 8; averages, 3; slice thickness, 0.5 mm; slicer orientation, axial; field of view, 20 mm \times 20 mm; resolution, 0.078 mm \times 0.078 mm.

Patient Samples. The brain tumor samples were collected under the institutional banking IRB approved protocol 10-417. The samples were distributed under tissue sub-usage protocol approval. All patients undergoing brain tumor surgery at the Brigham are open to this banking protocol at the time of surgery. The IRB is approved by the DF/HCC IRB, and signed consent was obtained from all patients. Freshly isolated tumor tissue was harvested and processed within a few hours of surgery.

RNA Sequencing from BILs. Total RNA was isolated directly from triplicate samples (BILs 3 d after ADU-S100) with the Qiagen (Hilden, Germany) RNeasy isolation kit (catalog no. 8028) via on-column DNase digestion. Briefly, libraries were prepared with SMARTer Stranded Total RNAseq version 2 Pico Input Mammalian sample preparation kits from 500 pg of purified total RNA according to the manufacturer's protocol. The finished dsDNA libraries were quantified by Qubit fluorometer and Agilent TapeStation 4200. Uniquely dual indexed libraries were pooled in an equimolar ratio and shallowly sequenced on an Illumina MiSeq to further evaluate library quality and pool balance. The final pool was sequenced on an Illumina NovaSeq 6000 targeting 80 million 100-bp read pairs per library at the Dana-Farber Cancer Institute Molecular Biology Core Facilities. Data quality controls and replicate correlation were evaluated in the VIPER software package (89).

Bulk RNA-Seq Analysis. Sequencing reads were aligned using STAR (90) with an average of 3E7 uniquely mapped reads per sample and a mismatch rate per base of <1%. Aligned reads were first filtered to remove genes with <10 counts across all samples. Differential expression analysis was performed with DESeq2

in R (91), with an FDR-adjusted P value threshold of ≤ 0.1 . A volcano plot showing \log_2 fold change and $-\log_{10}$ (adjusted P value) was then generated from the differential expression analysis in *ggplot2*. Gene enrichment analysis was performed with *Enrichr* (92) to investigate enriched pathways. The $-\log_{10}$ (adjusted P values) of the most significant Gene Ontology (Biological Process) pathways for each condition were then plotted as bar graphs, alongside the corresponding values for the other condition for comparison. To further compare IFN gene signatures between ADU-treated samples and PBS controls, gene sets known to be responsive to IFN α , IFN β , and IFN γ treatment were curated from published literature (62). We estimated the distributions of gene expression for the various IFN gene signatures per treatment group by first applying a regularized log transformation the filtered gene counts, followed by z-score normalization by gene. Violin plots were then used to visualize the distribution of the normalized gene expression values by condition. Statistical comparisons were performed via Wilcoxon test, with FDR for P value adjustment.

Statistical Analyses. All graphs depict mean \pm SEM unless otherwise indicated. Tests for differences between two groups were performed via unpaired

two-tailed Student's t test. Multiple comparisons used one-way or two-way ANOVA, as specified in the figure legends. Log-rank test was used for patient and mouse survival analyses. GraphPad Prism 9 was used for statistical analysis of experiments, data processing, and presentation. Sample sizes for in vivo studies were determined empirically based on results from prior publications.

Data Availability. Sequencing data is available at the National Center for Biotechnology Information (NCBI) Gene Expression Omnibus (GEO) (GSE206604) (93).

ACKNOWLEDGMENTS. We thank Dana-Farber/Harvard Cancer Center in Boston, MA, for the use of the Specialized Histopathology Core, which provided histology and immunohistochemistry service. Dana-Farber/Harvard Cancer Center is supported in part by National Cancer Institute Cancer Center Support Grant No. NIH 5 P30 CA06516. Additional funding was provided by the Expect Miracles Foundation and the Robert A. and Renée E. Belfer Family Foundation. The authors thank Tomer Filkenberg for his help with immunofluorescence staining and Brandon Piel for GBM explants.

1. P. Sharma, J. P. Allison, The future of immune checkpoint therapy. *Science* **348**, 56–61 (2015).
2. A. Ribas, J. D. Wolchok, Cancer immunotherapy using checkpoint blockade. *Science* **359**, 1350–1355 (2018).
3. T. N. Schumacher, R. D. Schreiber, Neoantigens in cancer immunotherapy. *Science* **348**, 69–74 (2015).
4. P. A. Ott, F. S. Hodi, H. L. Kaufman, J. M. Wigginton, J. D. Wolchok, Combination immunotherapy: A road map. *J. Immunother. Cancer* **5**, 16 (2017).
5. R. Stupp *et al.*; European Organisation for Research and Treatment of Cancer Brain Tumor and Radiotherapy Groups; National Cancer Institute of Canada Clinical Trials Group, Radiotherapy plus concomitant and adjuvant temozolomide for glioblastoma. *N. Engl. J. Med.* **352**, 987–996 (2005).
6. B. M. Alexander, T. F. Cloughesy, Adult glioblastoma. *J. Clin. Oncol.* **35**, 2402–2409 (2017).
7. S. L. Topalian, C. G. Drake, D. M. Pardoll, Immune checkpoint blockade: A common denominator approach to cancer therapy. *Cancer Cell* **27**, 450–461 (2015).
8. S. C. Wei, C. R. Duffy, J. P. Allison, Fundamental mechanisms of immune checkpoint blockade therapy. *Cancer Discov.* **8**, 1069–1086 (2018).
9. A. Snyder *et al.*, Genetic basis for clinical response to CTLA-4 blockade in melanoma. *N. Engl. J. Med.* **371**, 2189–2199 (2014).
10. A. Omuro *et al.*, Nivolumab with or without ipilimumab in patients with recurrent glioblastoma: Results from exploratory phase I cohorts of CheckMate 143. *Neuro-oncol.* **20**, 674–686 (2018).
11. K. A. Schalper *et al.*, Neoadjuvant nivolumab modifies the tumor immune microenvironment in resectable glioblastoma. *Nat. Med.* **25**, 470–476 (2019).
12. T. F. Cloughesy *et al.*, Neoadjuvant anti-PD-1 immunotherapy promotes a survival benefit with intratumoral and systemic immune responses in recurrent glioblastoma. *Nat. Med.* **25**, 477–486 (2019).
13. J. Zhao *et al.*, Immune and genomic correlates of response to anti-PD-1 immunotherapy in glioblastoma. *Nat. Med.* **25**, 462–469 (2019).
14. E. Bouffet *et al.*, Immune checkpoint inhibition for hypermutant glioblastoma multiforme resulting from germline biallelic mismatch repair deficiency. *J. Clin. Oncol.* **34**, 2206–2211 (2016).
15. T. M. Johannis *et al.*, Immunogenomics of hypermutated glioblastoma: A patient with germline POLE deficiency treated with checkpoint blockade immunotherapy. *Cancer Discov.* **6**, 1230–1236 (2016).
16. H. M. Kluger *et al.*, Long-term survival of patients with melanoma with active brain metastases treated with pembrolizumab on a phase II trial. *J. Clin. Oncol.* **37**, 52–60 (2019).
17. E. Ladomersky *et al.*, IDO1 inhibition synergizes with radiation and PD-1 blockade to durably increase survival against advanced glioblastoma. *Clin. Cancer Res.* **24**, 2559–2573 (2018).
18. D. A. Reardon *et al.*, Glioblastoma eradication following immune checkpoint blockade in an orthotopic, immunocompetent model. *Cancer Immunol. Res.* **4**, 124–135 (2016).
19. R. A. Buerki, Z. S. Chheda, H. Okada, Immunotherapy of primary brain tumors: Facts and hopes. *Clin. Cancer Res.* **24**, 5198–5205 (2018).
20. L. Corrales, T. F. Gajewski, Molecular pathways: Targeting the stimulator of interferon genes (STING) in the immunotherapy of cancer. *Clin. Cancer Res.* **21**, 4774–4779 (2015).
21. G. Berger, M. Marloye, S. E. Lawler, Pharmacological modulation of the STING pathway for cancer immunotherapy. *Trends Mol. Med.* **25**, 412–427 (2019).
22. H. Ishikawa, G. N. Barber, STING is an endoplasmic reticulum adaptor that facilitates innate immune signalling. *Nature* **455**, 674–678 (2008).
23. M. Gomelsky, cAMP, c-di-GMP, c-di-AMP and now cGMP: Bacteria use them all! *Mol. Microbiol.* **79**, 562–565 (2011).
24. H. Ishikawa, Z. Ma, G. N. Barber, STING regulates intracellular DNA-mediated, type I interferon-dependent innate immunity. *Nature* **461**, 788–792 (2009).
25. S. R. Woo *et al.*, STING-dependent cytosolic DNA sensing mediates innate immune recognition of immunogenic tumors. *Immunity* **41**, 830–842 (2014).
26. M. S. Diamond *et al.*, Type I interferon is selectively required by dendritic cells for immune rejection of tumors. *J. Exp. Med.* **208**, 1989–2003 (2011).
27. M. B. Fuentes *et al.*, Host type I IFN signals are required for antitumor CD8⁺ T cell responses through CD8 α^+ dendritic cells. *J. Exp. Med.* **208**, 2005–2016 (2011).
28. J. Wu *et al.*, Cyclic GMP-AMP is an endogenous second messenger in innate immune signaling by cytosolic DNA. *Science* **339**, 826–830 (2013).
29. X. Zhang *et al.*, The cytosolic DNA sensor cGAS forms an oligomeric complex with DNA and undergoes switch-like conformational changes in the activation loop. *Cell Rep.* **6**, 421–430 (2014).
30. L. Sun, J. Wu, F. Du, X. Chen, Z. J. Chen, Cyclic GMP-AMP synthase is a cytosolic DNA sensor that activates the type I interferon pathway. *Science* **339**, 786–791 (2013).
31. P. Gao *et al.*, Structure-function analysis of STING activation by c[G(2',5')pA(3',5')p] and targeting by antiviral DMXAA. *Cell* **154**, 748–762 (2013).
32. X. Zhang *et al.*, Cyclic GMP-AMP containing mixed phosphodiester linkages is an endogenous high-affinity ligand for STING. *Mol. Cell* **51**, 226–235 (2013).
33. T. Cavlar, T. Deimling, A. Ablasser, K. P. Hopfner, V. Hornung, Species-specific detection of the antiviral small-molecule compound CMA by STING. *EMBO J.* **32**, 1440–1450 (2013).
34. E. J. Diner *et al.*, The innate immune DNA sensor cGAS produces a noncanonical cyclic dinucleotide that activates human STING. *Cell Rep.* **3**, 1355–1361 (2013).
35. K. Honda, A. Takaoka, T. Taniguchi, I. Type, Type I interferon [corrected] gene induction by the interferon regulatory factor family of transcription factors. *Immunity* **25**, 349–360 (2006).
36. K. Kato, H. Omura, R. Ishitani, Cyclic GMP-AMP is an endogenous second messenger in innate immune signaling by cytosolic DNA. *Science* **339**, 826–830 (2017).
37. G. N. Barber, STING-dependent cytosolic DNA sensing pathways. *Trends Immunol.* **35**, 88–93 (2014).
38. Y. Tanaka, Z. J. Chen, STING specifies IRF3 phosphorylation by TBK1 in the cytosolic DNA signaling pathway. *Sci. Signal.* **5**, ra20 (2012).
39. L. Corrales *et al.*, Direct activation of STING in the tumor microenvironment leads to potent and systemic tumor regression and immunity. *Cell Rep.* **11**, 1018–1030 (2015).
40. L. Li *et al.*, Hydrolysis of 2'3'-cGAMP by ENPP1 and design of nonhydrolyzable analogs. *Nat. Chem. Biol.* **10**, 1043–1048 (2014).
41. E. Curran *et al.*, STING pathway activation stimulates potent immunity against acute myeloid leukemia. *Cell Rep.* **15**, 2357–2366 (2016).
42. O. Demaria *et al.*, STING activation of tumor endothelial cells initiates spontaneous and therapeutic antitumor immunity. *Proc. Natl. Acad. Sci. U.S.A.* **112**, 15408–15413 (2015).
43. Q. Chen, L. Sun, Z. J. Chen, Regulation and function of the cGAS-STING pathway of cytosolic DNA sensing. *Nat. Immunol.* **17**, 1142–1149 (2016).
44. B. A. Flood, E. F. Higgs, S. Li, J. J. Luke, T. F. Gajewski, STING pathway agonism as a cancer therapeutic. *Immunol. Rev.* **290**, 24–38 (2019).
45. T. Ohkuri *et al.*, STING contributes to anti-glioma immunity via triggering type I IFN signals in the tumor microenvironment. *Cancer Immunol. Res.* **2**, 1199–1208 (2014).
46. T. Ohkuri, A. Ghosh, A. Kosaka, S. N. Sarkar, H. Okada, Protective role of STING against gliomagenesis: Rational use of STING agonist in anti-glioma immunotherapy. *Oncol Immunology* **4**, e999523 (2015).
47. C. E. Boudreau *et al.*, Intratumoral delivery of STING agonist results in clinical responses in canine glioblastoma. *Clin. Cancer Res.* **27**, 5528–5535 (2021).
48. S. P. Williams *et al.*, Indirubins decrease glioma invasion by blocking migratory phenotypes in both the tumor and stromal endothelial cell compartments. *Cancer Res.* **71**, 5374–5380 (2011).
49. M. Campisi *et al.*, Tumor-derived cGAMP regulates activation of the vasculature. *Front. Immunol.* **11**, 2090 (2020).
50. I. Cañadas *et al.*, Tumor innate immunity primed by specific interferon-stimulated endogenous retroviruses. *Nat. Med.* **24**, 1143–1150 (2018).
51. R. Falahat, A. Berglund, R. M. Putney, P. Perez-villarroel, S. Aoyama, Epigenetic reprogramming of tumor cell: Intrinsic STING function sculpts antigenicity and T cell recognition of melanoma. *Proc. Natl. Acad. Sci. U.S.A.* **118**, e2013598118 (2021).
52. K. E. Sivick *et al.*, Magnitude of therapeutic STING activation determines CD8⁺ T cell-mediated anti-tumor immunity. *Cell Rep.* **25**, 3074–3085.e5 (2018).
53. N. R. Mahadevan *et al.*, Intrinsic immunogenicity of small cell lung carcinoma revealed by its cellular plasticity. *Cancer Discover.* **11**, 1952–1969 (2021).
54. S. Van Gassen *et al.*, FlowSOM: Using self-organizing maps for visualization and interpretation of cytometry data. *Cytometry A* **87**, 636–645 (2015).
55. V. Bronte *et al.*, Recommendations for myeloid-derived suppressor cell nomenclature and characterization standards. *Nat. Commun.* **7**, 12150 (2016).
56. A. Abdullah *et al.*, STING-mediated type-I interferons contribute to the neuroinflammatory process and detrimental effects following traumatic brain injury. *J. Neuroinflammation* **15**, 323 (2018).
57. C. J. Nicolai *et al.*, NK cells mediate clearance of CD8⁺ T cell-resistant tumors in response to STING agonists. *Sci. Immunol.* **5**, 2738 (2020).
58. A. M. Esteves, E. Papaevangelou, P. Dasgupta, C. Galustian, Combination of interleukin-15 with a STING agonist, ADU-S100 analog: A potential immunotherapy for prostate cancer. *Front. Oncol.* **11**, 621550 (2021).
59. V. Fensterl, G. C. Sen, Interferon-induced Irf proteins: Their role in viral pathogenesis. *J. Virol.* **89**, 2462–2468 (2015).
60. J. D. MacMicking, IFN-inducible GTPases and immunity to intracellular pathogens. *Trends Immunol.* **25**, 601–609 (2004).

61. A. M. Johnson, E. K. Kleczko, R. A. Nemenoff, Eicosanoids in cancer: New roles in immunoregulation. *Front. Pharmacol.* **11**, 595498 (2020).
62. S. D. Der, A. Zhou, B. R. G. Williams, R. H. Silverman, Identification of genes differentially regulated by interferon α , β , or γ using oligonucleotide arrays. *Proc. Natl. Acad. Sci. U.S.A.* **95**, 15623–15628 (1998).
63. T. Walzer *et al.*, Identification, activation, and selective in vivo ablation of mouse NK cells via Nkp46. *Proc. Natl. Acad. Sci. U.S.A.* **104**, 3384–3389 (2007).
64. L. Gauthier *et al.*, Multifunctional natural killer cell engagers targeting Nkp46 trigger protective tumor immunity. *Cell* **177**, 1701–1713.e16 (2019).
65. H. Fang *et al.*, CD94 expression patterns in reactive and neoplastic T-cell and NK-cell proliferations. *Leuk. Res.* **108**, 106614 (2021).
66. R. M. Desai, S. T. Koshy, S. A. Hilderbrand, D. J. Mooney, N. S. Joshi, Versatile click alginate hydrogels crosslinked via tetrazine-norbornene chemistry. *Biomaterials* **50**, 30–37 (2015).
67. J. B. Iorgulescu *et al.*, Concurrent dexamethasone limits the clinical benefit of immune checkpoint blockade in glioblastoma. *Clin. Cancer Res.* **27**, 276–287 (2021).
68. J. K. Khalsa *et al.*, Immune phenotyping of diverse syngeneic murine brain tumors identifies immunologically distinct types. *Nat. Commun.* **11**, 3912 (2020).
69. K. E. Smith *et al.*, Cure of established GL261 mouse gliomas after combined immunotherapy with GM-CSF and IFN γ is mediated by both CD8+ and CD4+ T-cells. *Int. J. Cancer* **124**, 630–637 (2009).
70. V. Genoud *et al.*, Responsiveness to anti-PD-1 and anti-CTLA-4 immune checkpoint blockade in SB28 and GL261 mouse glioma models. *Onc Immunology* **7**, e1501137 (2018).
71. A. Marcus *et al.*, Tumor-derived cGAMP triggers a STING-mediated interferon response in non-tumor cells to activate the NK cell response. *Immunity* **49**, 754–763.e4 (2018).
72. T. Xia, H. Konno, G. N. Barber, Recurrent loss of STING signaling in melanoma correlates with susceptibility to viral oncolysis. *Cancer Res.* **76**, 6747–6759 (2016).
73. E. B. Vitner *et al.*, Induction of the type I interferon response in neurological forms of Gaucher disease. *J. Neuroinflammation* **13**, 104 (2016).
74. Y. J. Crow *et al.*, Mutations in the gene encoding the 3'-5' DNA exonuclease TREX1 cause Aicardi-Goutières syndrome at the AGS1 locus. *Nat. Genet.* **38**, 917–920 (2006).
75. R. Field, S. Campion, C. Warren, C. Murray, C. Cunningham, Systemic challenge with the TLR3 agonist poly I:C induces amplified IFN α / β and IL-1 β responses in the diseased brain and exacerbates chronic neurodegeneration. *Brain Behav. Immun.* **24**, 996–1007 (2010).
76. Q. Li *et al.*, Inhibition of double-strand DNA-sensing cGAS ameliorates brain injury after ischemic stroke. *EMBO Mol. Med.* **12**, e11002 (2020).
77. Z. Li *et al.*, Brain transforms natural killer cells that exacerbate brain edema after intracerebral hemorrhage. *J. Exp. Med.* **217**, e20200213 (2020).
78. Z. Wang *et al.*, cGAS/STING axis mediates a topoisomerase II inhibitor-induced tumor immunogenicity. *J. Clin. Invest.* **129**, 4850–4862 (2019).
79. S. Kitajima *et al.*, Suppression of STING associated with LKB1 loss in KRAS-driven lung cancer. *Cancer Discov.* **9**, 34–45 (2019).
80. A. M. Seligman, M. J. Shear, L. Alexander, Studies in carcinogenesis: VIII. Experimental production of brain tumors in mice with methylcholanthrene. *Am. J. Cancer* **37**, 364–395 (1939).
81. J. I. Ausman, W. R. Shapiro, D. P. Rall, Studies on the chemotherapy of experimental brain tumors: Development of an experimental model. *Cancer Res.* **30**, 2394–2400 (1970).
82. T. Szatmári *et al.*, Detailed characterization of the mouse glioma 261 tumor model for experimental glioblastoma therapy. *Cancer Sci.* **97**, 546–553 (2006).
83. Q. Chen *et al.*, Carcinoma-astrocyte gap junctions promote brain metastasis by cGAMP transfer. *Nature* **533**, 493–498 (2016).
84. A. M. Jeffries, I. Marriott, Human microglia and astrocytes express cGAS-STING viral sensing components. *Neurosci. Lett.* **658**, 53–56 (2017).
85. A. Decout, J. D. Katz, S. Venkatraman, A. Ablasser, The cGAS-STING pathway as a therapeutic target in inflammatory diseases. *Nat. Rev. Immunol.* **21**, 548–569 (2021).
86. L. Schadt *et al.*, Cancer-cell-intrinsic cGAS expression mediates tumor immunogenicity. *Cell Rep.* **29**, 1236–1248.e7 (2019).
87. F. Ricklefs *et al.*, Extracellular vesicles from high-grade glioma exchange diverse pro-oncogenic signals that maintain intratumoral heterogeneity. *Cancer Res.* **76**, 2876–2881 (2016).
88. A. Lueckgen *et al.*, Hydrolytically-degradable click-crosslinked alginate hydrogels. *Biomaterials* **181**, 189–198 (2018).
89. M. Cornwell *et al.*, VIPER: Visualization pipeline for RNA-seq, a snakemake workflow for efficient and complete RNA-seq analysis. *BMC Bioinformatics* **19**, 135 (2018).
90. A. Dobin *et al.*, STAR: Ultrafast universal RNA-seq aligner. *Bioinformatics* **29**, 15–21 (2013).
91. M. I. Love, W. Huber, S. Anders, Moderated estimation of fold change and dispersion for RNA-seq data with DESeq2. *Genome Biol.* **15**, 550 (2014).
92. M. V. Kuleshov *et al.*, Enrichr: A comprehensive gene set enrichment analysis web server 2016 update. *Nucleic Acids Res.* **44** (W1), W90–W97 (2016).
93. G. Berger, K. Adu-Berchie, S. E. Lawler, STING activation promotes robust immune response and NK cell-mediated tumor regression in glioblastoma models. Series GSE206604. GEO. <https://www.ncbi.nlm.nih.gov/geo/query/acc.cgi?acc=GSE206604>. Deposited 21 June 2022.